

NACE / SSPC

**Old coating
Initial
condition**



HAMMELMANN performance

Manual tools

Dockmaster

**Old coating
WJ-3**



**850 bar
35 l/min
70 kw**

**850 bar
190 l/min
350 kw**

12-20 m²/h

300 m²/h

**Old coating
WJ-2**



**1400 bar
25 l/min
80 kw**

**1400 bar
196 l/min
550 kw**

8-12 m²/h

300 m²/h

**Old coating
WJ-1**



**2500 bar
20 l/min
90 kw**

**2500 bar
85 l/min
400 kw**

6-10 m²/h

150 m²/h

NACE / SSPC

Red epoxy
shop primer

Initial
condition

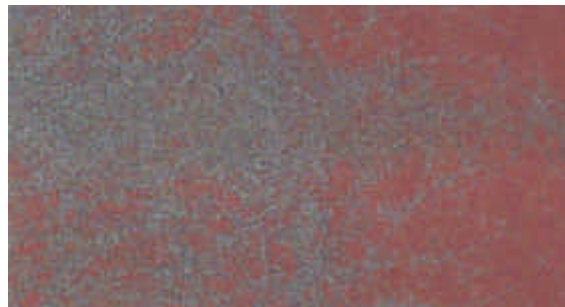


HAMMELMANN performance

Manual tools

Dockmaster

Red epoxy
WJ-3



850 bar
35 l/min
70 kw

850 bar
190 l/min
350 kw

12-20 m²/h

300 m²/h

Red epoxy
WJ-2



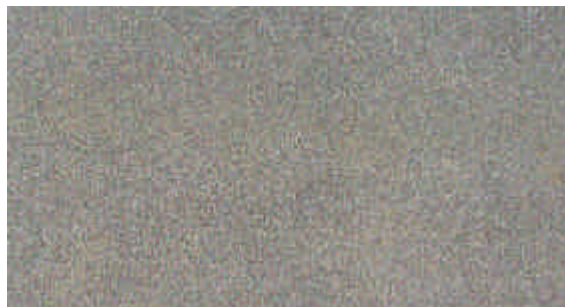
1400 bar
25 l/min
80 kw

1400 bar
196 l/min
550 kw

8-12 m²/h

300 m²/h

Red epoxy
WJ-1



2500 bar
20 l/min
90 kw

2500 bar
85 l/min
400 kw

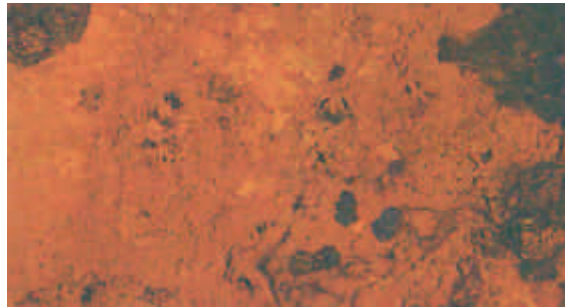
6-10 m²/h

150 m²/h

NACE / SSPC

Rust grade D

Initial condition



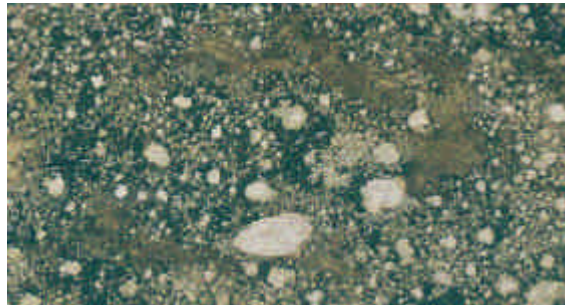
HAMMELMANN performance

Manual tools

Dockmaster

Rust grade D

WJ-3



**850 bar
35 l/min
70 kw**

**850 bar
190 l/min
350 kw**

12-20 m²/h

300 m²/h

Rust grade D

WJ-2



**1400 bar
25 l/min
80 kw**

**1400 bar
196 l/min
550 kw**

8-12 m²/h

300 m²/h

Rust grade D

WJ-1



**2500 bar
20 l/min
90 kw**

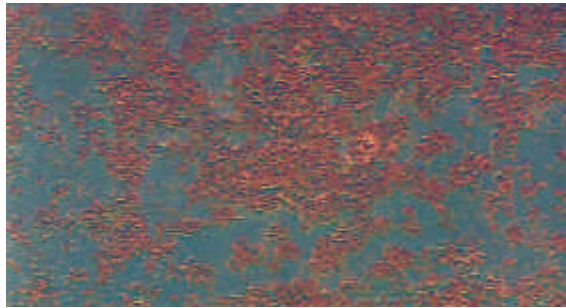
**2500 bar
85 l/min
400 kw**

6-10 m²/h

150 m²/h

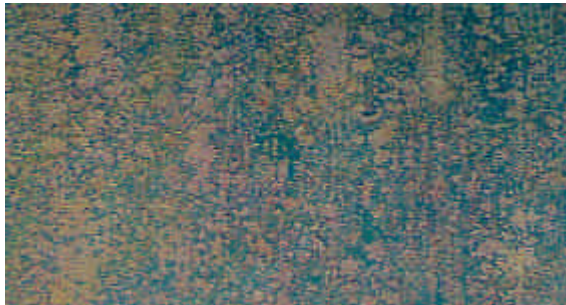
Rust grade B

Initial
condition



Rust grade B

B Sa 1



Rust grade B

B Sa 2



Rust grade B

B Sa 2 1/2



ISO 8501-1
(Swedish standard)

This standard applies to the treatment of steel surfaces by abrasive blasting methods.

The definitions cannot be used in conjunction with water jetting.

Water jetting cannot produce a profile on a steel surface.

High pressure systems can return the surface to its original conditions.